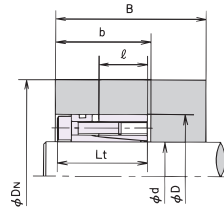


U.S. TSUBAKI POWER-LOCK®

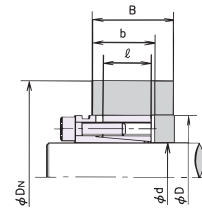
STAINLESS STEEL FLANGED/STRAIGHT OPTION

RE Metric Series

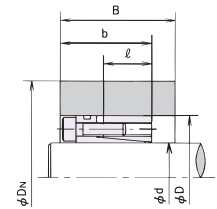
Straight Type
Without Snap Ring



$B \geq 2\ell$
Hub Configuration Coefficient
 $K_3=0.8$



$L_2 < B < 2\ell$
Hub Configuration Coefficient
 $K_3=1.0$



No Guide Portion
Hub Configuration Coefficient
 $K_3=1.0$

Hub Configuration Coefficient $K_3=0.8$ Min. Hub Dia.

Model Number	RE-SS	Hub Contact Pressure P' (psi)	Yield Point and Material examples									
			147 Mpa	176 Mpa	206 Mpa	225 Mpa	245 Mpa	274 Mpa	294 Mpa	343 Mpa	392 Mpa	441 Mpa
			21300 psi	25500 psi	29900 psi	32600 psi	35500 psi	39700 psi	42600 psi	49700 psi	56900 psi	64000 psi
			1010 304SS 316SS	1015 1118	1020	1030	1035 1040 1144	1045	1055			
PL005X018	RE-SS	7687	0.954	0.906	0.873	0.858	0.844	0.828	0.819	0.802	0.790	0.780
PL006X019	RE-SS	7252	0.989	0.943	0.911	0.895	0.882	0.867	0.858	0.841	0.829	0.819
PL008X021	RE-SS	8847	1.167	1.099	1.053	1.031	1.012	0.990	0.978	0.954	0.937	0.924
PL010X026	RE-SS	10153	1.529	1.423	1.353	1.320	1.292	1.259	1.241	1.207	1.182	1.163
PL011X027	RE-SS	9718	1.558	1.456	1.387	1.355	1.328	1.296	1.278	1.244	1.220	1.201
PL012X028	RE-SS	11748	1.770	1.622	1.527	1.483	1.445	1.403	1.379	1.335	1.303	1.278
PL014X030	RE-SS	11893	1.909	1.747	1.643	1.595	1.554	1.508	1.482	1.433	1.398	1.372
PL015X031	RE-SS	11603	1.946	1.787	1.683	1.635	1.595	1.548	1.523	1.474	1.439	1.413
PL016X032	RE-SS	11168	1.969	1.816	1.715	1.669	1.629	1.584	1.558	1.511	1.476	1.450
PL017X033	RE-SS	10008	1.928	1.797	1.710	1.669	1.634	1.594	1.571	1.528	1.497	1.473
PL018X034	RE-SS	9718	1.962	1.833	1.747	1.707	1.672	1.632	1.610	1.567	1.536	1.512
PL019X035	RE-SS	12473	2.289	2.082	1.950	1.890	1.839	1.781	1.749	1.689	1.645	1.613
PL020X039	RE-SS	14939	2.893	2.551	2.345	2.254	2.179	2.094	2.048	1.962	1.901	1.855
PL022X041	RE-SS	14214	2.926	2.606	2.410	2.322	2.249	2.167	2.121	2.037	1.977	1.932
PL024X043	RE-SS	16245	3.437	2.968	2.698	2.581	2.484	2.377	2.319	2.212	2.136	2.080
PL025X044	RE-SS	15809	3.428	2.982	2.721	2.607	2.513	2.409	2.352	2.246	2.172	2.117
PL028X049	RE-SS	16099	3.483	3.362	3.060	2.928	2.820	2.700	2.635	2.514	2.429	2.366
PL030X050	RE-SS	15809	3.896	3.389	3.093	2.963	2.856	2.737	2.673	2.553	2.468	2.405
PL032X052	RE-SS	14794	3.828	3.382	3.113	2.994	2.894	2.783	2.722	2.609	2.529	2.469
PL035X058	RE-SS	15954	4.557	3.955	3.604	3.451	3.326	3.186	3.110	2.969	2.869	2.795
PL038X060	RE-SS	17115	5.060	4.300	3.876	3.694	3.546	3.383	3.295	3.133	3.020	2.936
PL040X063	RE-SS	16390	5.080	4.376	3.972	3.797	3.653	3.494	3.408	3.249	3.137	3.054
PL042X066	RE-SS	17695	5.782	4.854	4.349	4.135	3.961	3.771	3.669	3.482	3.351	3.254
PL045X068	RE-SS	17260	5.789	4.905	4.414	4.205	4.034	3.847	3.746	3.560	3.430	3.334
PL048X072	RE-SS	17695	6.308	5.295	4.744	4.511	4.322	4.114	4.003	3.798	3.656	3.550
PL050X075	RE-SS	18130	6.769	5.627	5.017	4.761	4.555	4.329	4.208	3.987	3.833	3.719

Hub Configuration Coefficient $K_3=1.0$ Min. Hub Dia.

Model Number	RE-SS	Hub Contact Pressure P' (psi)	Yield Point and Material examples									
			147 Mpa	176 Mpa	206 Mpa	225 Mpa	245 Mpa	274 Mpa	294 Mpa	343 Mpa	392 Mpa	441 Mpa
			21300 psi	25500 psi	29900 psi	32600 psi	35500 psi	39700 psi	42600 psi	49700 psi	56900 psi	64000 psi
			1010 304SS 316SS	1015 1118	1020	1030	1035 1040 1144	1045	1055			
PL005X018	RE-SS	7687	1.034	0.967	0.922	0.901	0.883	0.862	0.850	0.828	0.812	0.800
PL006X019	RE-SS	7252	1.066	1.002	0.958	0.938	0.920	0.900	0.888	0.866	0.850	0.838
PL008X021	RE-SS	8847	1.286	1.187	1.122	1.092	1.066	1.037	1.021	0.990	0.967	0.950
PL010X026	RE-SS	10153	1.718	1.559	1.458	1.412	1.373	1.329	1.305	1.259	1.226	1.201
PL011X027	RE-SS	9718	1.739	1.587	1.490	1.445	1.407	1.364	1.341	1.296	1.263	1.239
PL012X028	RE-SS	11748	2.049	1.813	1.670	1.607	1.554	1.495	1.463	1.402	1.359	1.327
PL014X030	RE-SS	11893	2.217	1.957	1.800	1.731	1.673	1.608	1.573	1.507	1.460	1.426
PL015X031	RE-SS	11603	2.246	1.993	1.839	1.770	1.713	1.649	1.613	1.548	1.501	1.466
PL016X032	RE-SS	11168	2.254	2.014	1.866	1.800	1.744	1.682	1.647	1.583	1.537	1.503
PL017X033	RE-SS	10008	2.162	1.966	1.841	1.784	1.735	1.681	1.650	1.593	1.552	1.521
PL018X034	RE-SS	9718	2.189	1.999	1.876	1.820	1.772	1.718	1.688	1.631	1.591	1.560
PL019X035	RE-SS	12473	2.693	2.351	2.149	2.061	1.988	1.907	1.862	1.780	1.722	1.679
PL020X039	RE-SS	14939	3.660	3.002	2.659	2.518	2.404	2.280	2.214	2.093	2.009	1.948
PL022X041	RE-SS	14214	3.609	3.025	2.708	2.574	2.466	2.347	2.283	2.166	2.084	2.023
PL024X043	RE-SS	16245	4.605	3.591	3.114	2.924	2.774	2.613	2.528	2.376	2.271	2.195
PL025X044	RE-SS	15809	4.496	3.573	3.122	2.939	2.795	2.639	2.557	2.408	2.305	2.230
PL028X049	RE-SS	16099	5.164	4.054	3.524	3.312	3.144	2.965	2.870	2.699	2.581	2.495
PL030X050	RE-SS	15809	5.109	4.060	3.547	3.340	3.176	2.999	2.905	2.736	2.619	2.534
PL032X052	RE-SS	14794	4.816	3.968	3.523	3.338	3.189	3.027	2.940	2.782	2.672	2.591
PL035X058	RE-SS	15954	6.018	4.753	4.143	3.897	3.703	3.494	3.384	3.184	3.047	2.946
PL038X060	RE-SS	17115	7.141	5.318	4.533	4.229	3.994	3.745	3.614	3.381	3.223	3.108
PL040X063	RE-SS	16390	6.859	5.312	4.594	4.309	4.085	3.845	3.719	3.492	3.337	3.223
PL042X066	RE-SS	17695	8.523	6.104	5.135	4.769	4.488	4.194	4.041	3.769	3.585	3.452
PL045X068	RE-SS	17260	8.252	6.090	5.174	4.823	4.550	4.263	4.113	3.845	3.663	3.531
PL048X072	RE-SS	17695	9.298	6.659	5.601	5.203	4.896	4.575	4.408	4.112	3.911	3.766
PL050X075	RE-SS	18130	10.382	7.173	5.969	5.524	5.185	4.832	4.649	4.326	4.109	3.952